

AUTOMASTER

THE AUTO EQUIPMENT SPECIALISTS

AUTOMASTER
SERVICE
GUARANTEE

Powerrex 4500kg & 6000kg

4 Post Lifts

**POWERREX
KOREA®**

Models Available:

- ◆ SL-3600 - 4500kg Service Lift - Blue or Black options
- ◆ SL-3600A - 4500kg Alignment lift - Blue , Red or Black Options
- ◆ SL-6000 - 6000kg Service Lift - Blue
- ◆ SL-6000A - 6000kg Alignment Lift - Blue or Red Options



Powerrex 4500kg & 6000kg

4 Post Lifts



OUR VICE-GRIP GUARANTEE
If you're not happy, we replace or refund in full.



Suitable for 3D or CCD aligners, small or large vehicles.

SPECIFICATIONS		
Capacity	4500kg	6000kg
Max lift height	1785mm	
Min Height	235mm	280mm
Lifting Time (approx)	45-55 Sec	
Width between columns	2734mm	2990mm
Runway length	4600mm	5695mm
Runway width	575mm	600mm
Total width incl motor	3350mm	3615mm
Ramp length	1200mm	1500mm
Total length incl ramps	6075mm	7770mm
Weight	1880kg	2200kg
Power supply	230V 1PH or 380V 3Ph	

FEATURES

- Powerrex Korea lifts are 100% Made in Korea.
- SL-3600 + SL-6000 Service lifts with no alignment kit
- SL-3600A + SL-6000A Alignment lifts
- Multiple position turn table recesses - (Alignment lift)
- Multi-directional lockable rear slip plates - (Alignment lift)
- 2 x rolling jacking beams powered by the main hydraulic pump of the lift there is no need to run pneumatic air lines to the jacking beams.
- Operation is a simple single button to go up and lock button to rest the lift onto the locks. Lower button raises the lift off the locks and lowers the lift.
- Low profile from the ground and fitted with long drive on ramps to accommodate low vehicles.
- Double lock safety system is automatically activated as the lift is raised and includes a cable brake emergency locking system should there be failure
- Electrically operated unlocking system is automatically operated by simply pushing the down button on the control panel or remote control. No pneumatic supply is required.
- Adjustable locking ladders in each post enable simple leveling of the lift and ensure all 4 corners of the lift are locked.
- Wide and long runways to accommodate small and large vehicles
- Suitable to lift low, large & small cars, vans, 4x4 & utes etc..
- Top quality Korean motor & pump unit
- Aus/NZ safety certified
- Full 2 year warranty



Includes 2 x jacking beams operated by switches mounted on each side of the jacking beams or from the remote control



6 Button remote control



3 button control panel

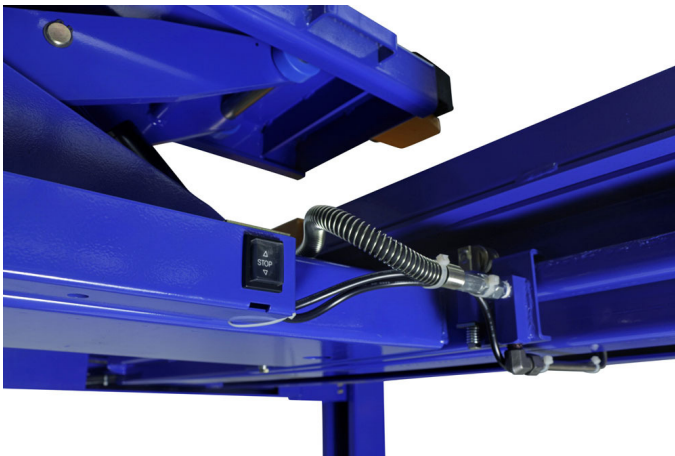
Powerrex 4500kg & 6000kg

4 Post Lifts



OUR VICE-GRIP GUARANTEE

If you're not happy, we replace or refund in full.

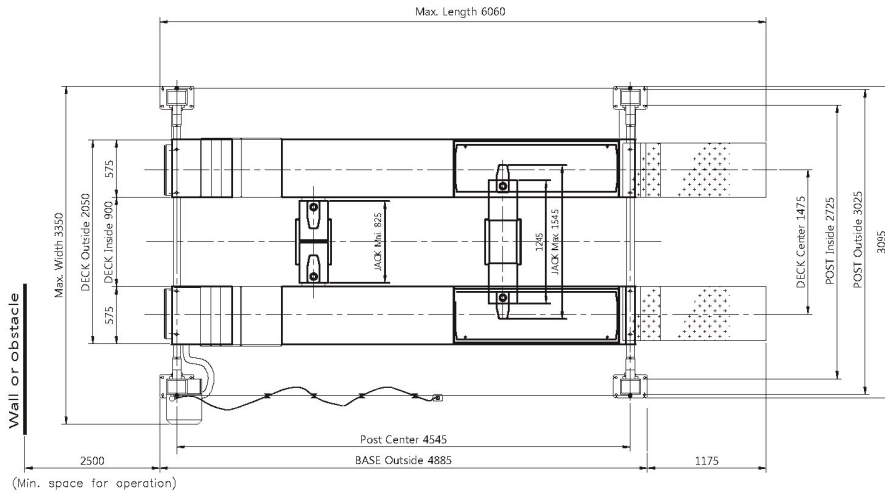


Powerrex 4500kg & 6000kg

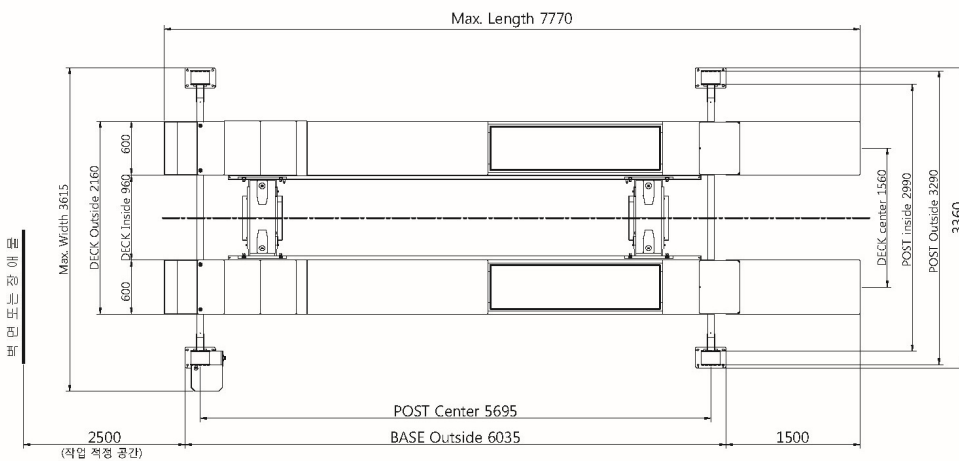
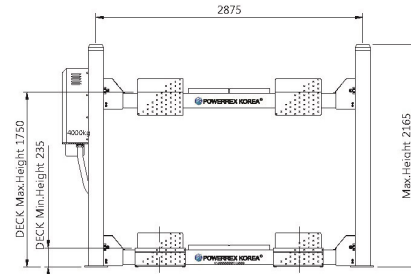
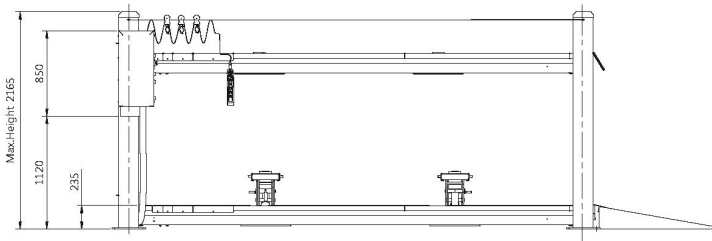
4 Post Lifts



OUR VICE-GRIP GUARANTEE
If you're not happy, we replace or refund in full.



MODEL NO.	SL-3600A (JACK TYPE)
MAX.CAPACITY	MAIN 4,500 Kg
	JACK 2,000 Kg
MAX.LIFTING HEIGHT	MAIN 1,750 mm
	JACK 540 mm
LOWEST HEIGHT	MAIN 235 mm
	JACK 205 mm
SIZE (mm)	3,350W x 2,165H x 6,060L
LIFTING TIME	MAIN 50 sec.(Approx)
	JACK 35 ~ 45 sec.(Approx)
LOWERING TIME	MAIN 60 ~ 80 sec.(Approx)
	JACK 65 ~ 80 sec.(Approx)
POWER & MOTOR	Single 2.5HPx3Px220Vx50/60Hz 3phase 2HPx5Px380V/415Vx50/60Hz
OPERATION METHOD	Control panel / Wired remote control type



MODEL NO.	SL-6000A (JACK TYPE)
능 력	MAIN 6,000 Kg
	JACK 3,000 Kg
최대 상승 높이	MAIN 1,785 mm
	JACK 560 mm
최저 높이	MAIN 280 mm
	JACK 230 mm
의 형 치 수	의 폭x내폭x길이 3,615 x 2,990 x 7,770(mm)
	최대 높이 2,165 mm
상 강 장 치 수	의 폭x내폭x길이 2,160 x 960 x 5,766(mm)
	상 승 시 간
하 강 시 간	MAIN 30 ~ 50 sec. JACK 35 ~ 50 sec.
	전 원 과 구 동 모 터
※ 작 용 방 법	핸 드 릴(푸시 버튼) & 유 선 리모트 콘트롤 타입

