

Original



Installation And Service Manual



Jack
Model: J5H

I. FEATURE AND SPECIFICATIONS

1. J5H features:

- Safety self-lock mechanism.
- Convenient for use.
- Can be used separately or match with parking lift.
- Adjustable adapters assy.

2. J5H. This Jack is designed match with hand pump.



Fig.1

SPECIFICATIONS

Model	Lifting capacity	Lifting height	Lifting times	Overall length	Overall width	Min. height	Air source (Mpa)
J5H	2200KG	490mm	-	920mm	469mm	195mm	-

II. Installation

1. Jack can start to work after connecting the pump.

1.1 J5H is connected with the hand pump(Fig.1)

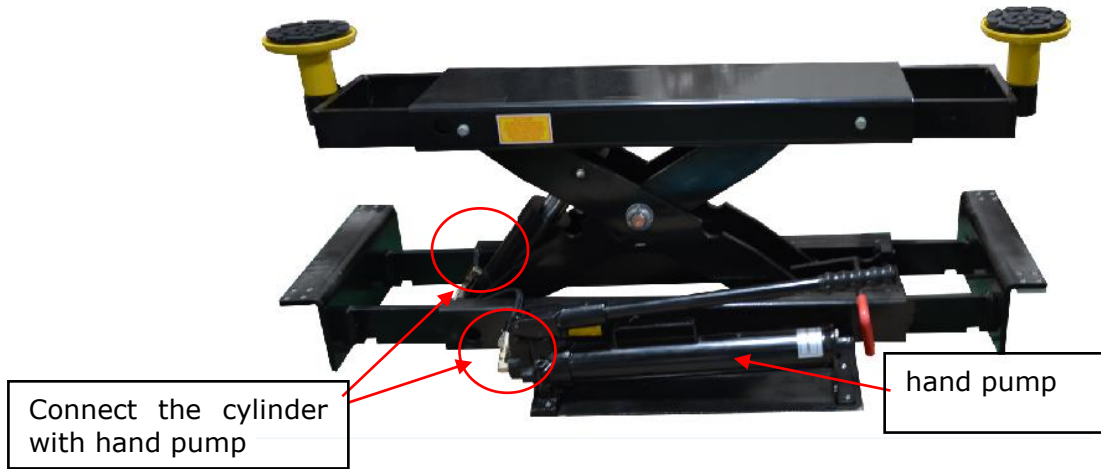


Fig.2

2. Lift vehicles: choose the suitable adapters(Fig. 3); Extend the upper extension to proper length to fit the lifting point of the vehicle(Fig. 4); shake the handle up/down (Fig.5); Raise the Jack and lock the Jack in the safety lock(Fig. 6)

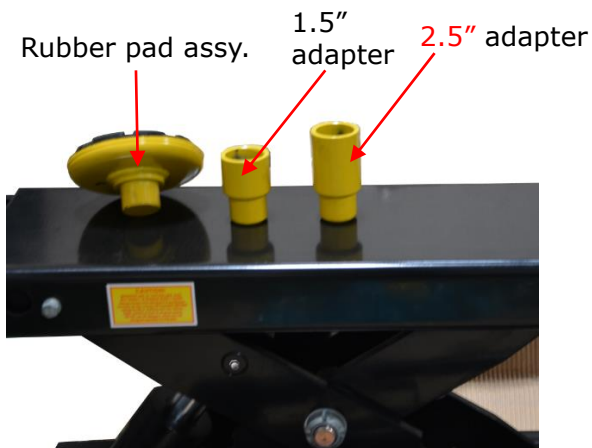


Fig.3

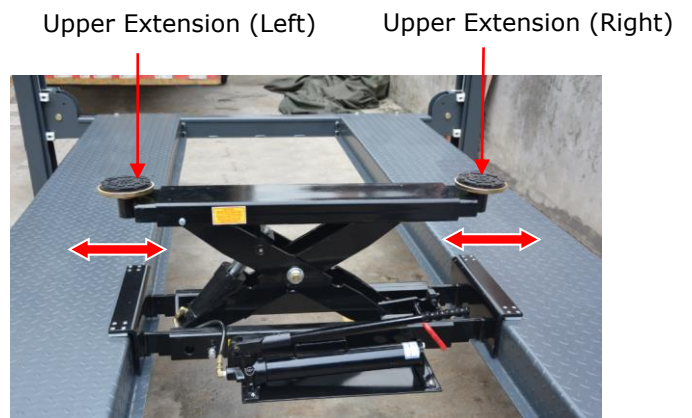
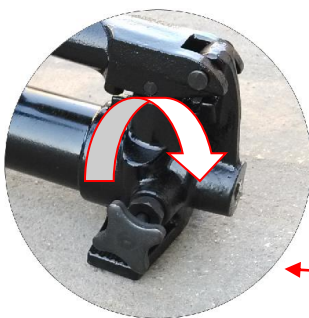


Fig. 4



2. Turn the switch clock-wised

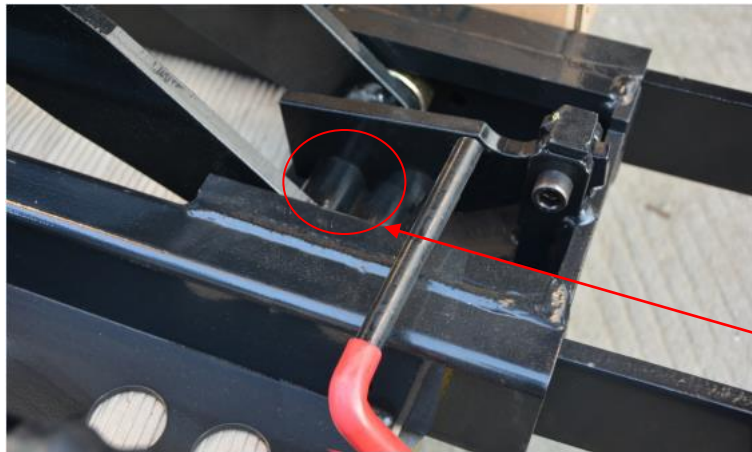
Fig.5



1. Shake the handle up and down to let the oil in

Way of J5H Oil Filled in

Fig.6



Safety support lock
locked at safety device

3. Lower the Jack.

3.1 Raise the Jack for few seconds to release the safety device, and then open the safety device (Fig. 7, Fig. 8)

Release the safety device

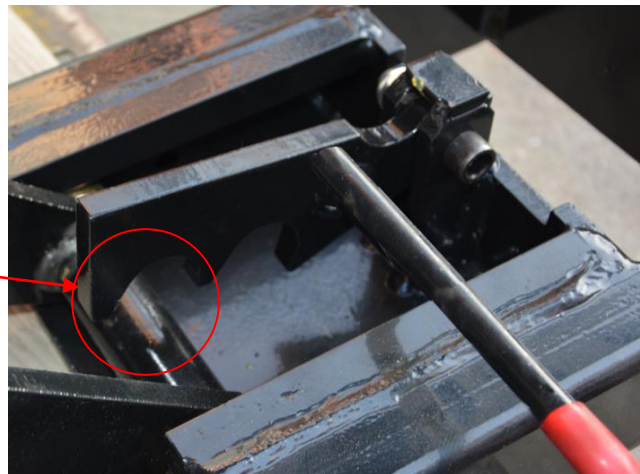


Fig. 7

Open the safety device

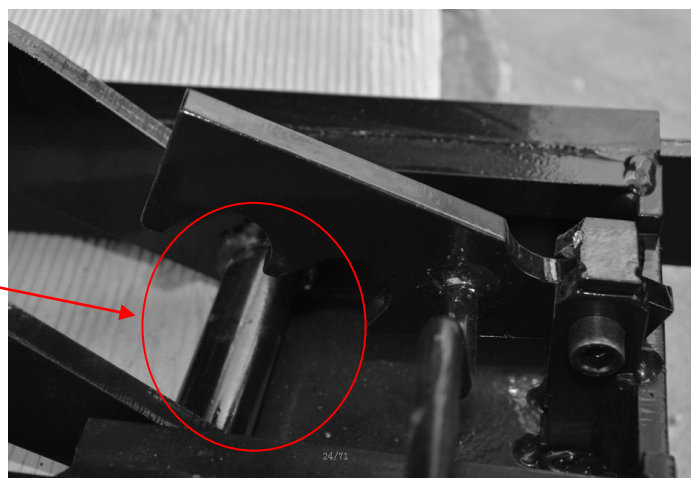


Fig. 8

3.2 Lower the Jack

- ③ Turn the switch to lower the jack (Fig 9)

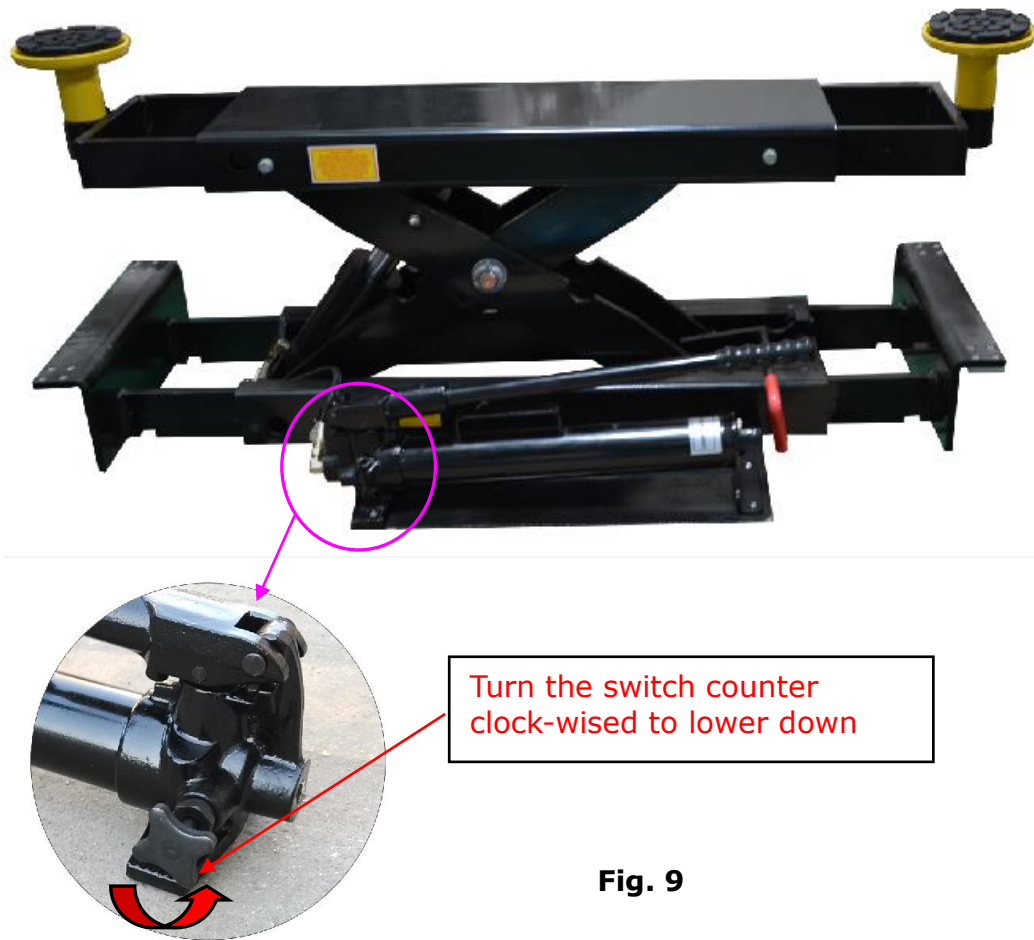


Fig. 9

III Maintenance

1. Check all the bolts if loose, tighten them if necessary before use.
2. Grease the running operation parts as maintenance. (fig 10)



Fig.10

IV. Exploded View

J5H

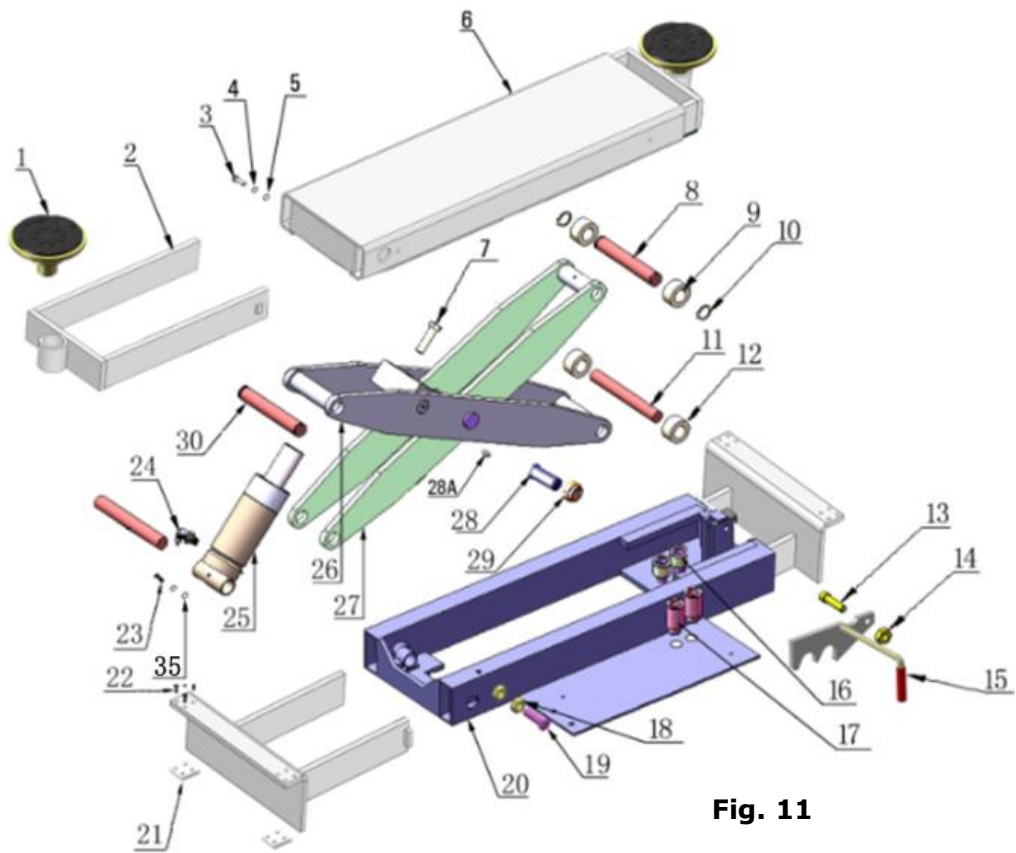


Fig. 11

Cylinder

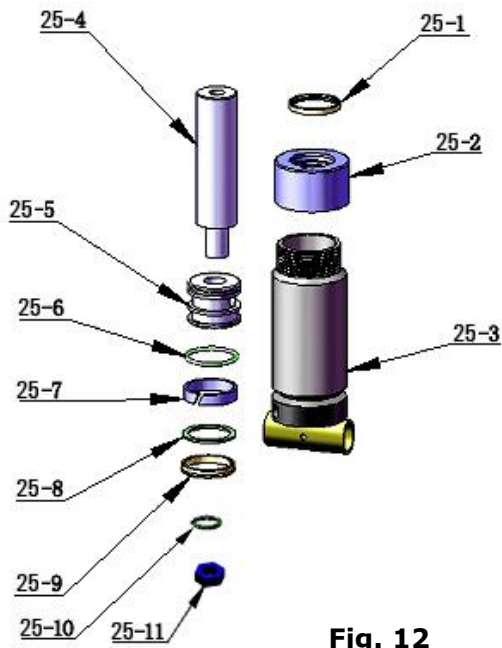


Fig. 12

Hand Pump



V. Parts List for J5H

Item	Part No.	Description	QTY	
1	11680030C	Rubber Pad Support assy.	2	
2	11600039	Extended platform	2	
3	10201002	Hex Bolt	2	
4	10209034	Lock Washer $\Phi 8$	2	
5	10209033	Washer $\Phi 8$	2	
6	11600038	Slide support tank	1	
7	10680055	Hex Bolt M12*70	1	
8	11600036	Pin for upper roller	1	
9	11600035	Upper roller	2	
10	10206032	Snap Ring $\Phi 25$	2	
11	11680011	Pin for lower rollor	2	
12	10680009	Roller	2	
13	10680013	Socket Bolt M12*50	1	
14	10206023	Self Locking Nut M12	1	
15	11600040	Safety Device	1	
16	10209051B	Stackable Adapter 1.5"	2	
17	10209052B	Stackable Adapter 2.5"	2	
18	10209021	Hex Nut M10	2	
19	10690018	Hex Bolt M10*40	2	
20	11680023A	Base	1	
21	11680059	Slider Block	4	
22	10600042	Screw M5X16	16	
23	10420005	Socket Set Screw M5*8	1	
24	10420097	90 degree fitting for cylinder	1	
25	10680021	Cylinder	1	
26	11600033	Outer Scissors	1	
27	11600034	Inner Scissors	1	
28	11680032	Scissors pin	2	
29	10620022	Self Locking Nut M24	2	
30	11600037	Connecting Pin	1	
31	10420097	90 degree fitting	1	
32	10720070	1/4 Oil Hose	1	
33	10209043	Hex Bolt	2	
34	10690002	Hand Pump	1	
35	10620064	Washer $\phi 6$	2	

- **Parts for J5H Cylinder**

Item	Part No.	Description	QTY	Item	Part No.	Description	QTY
25-1	10209078	Dust Ring	1	25-7	10201029	Support Ring	1
25-2	11670006	Head Cap	1	25-8	10201030	Y Ring	1
25-3	11670007	Bore Weldment	1	25-9	10201030A	Support Ring	1
25-4	11670008	Piston Rod	1	25-10	10206069	O Ring	1
25-5	11670009	Piston	1	25-11	10206071	Hex Bolt	1
25-6	10201031	O Ring	1				



PEAK CORPORATION

No. 3 Luomu Road, Shishan Town, Nanhai District, Foshan(528225), Guangdong, China

Tel: 86-757-81102815 81102805

Fax: 86-757-81102809

Email: peak@peaklift.cn <http://www.peaklift.cn>

Revision Date: 2019/12